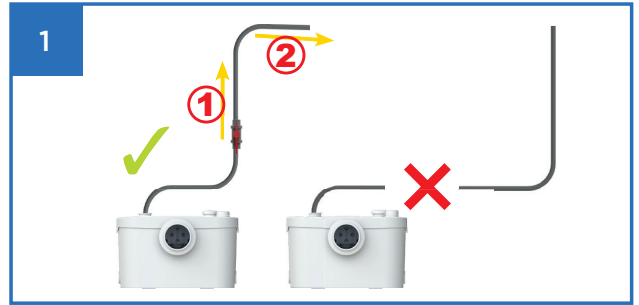
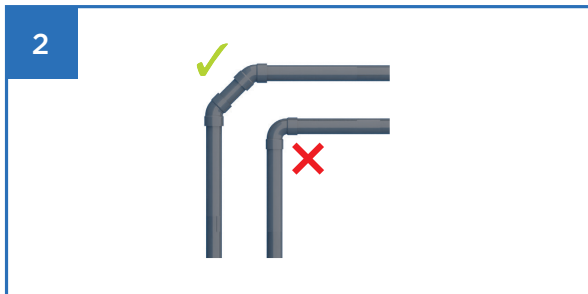




SOME RULES FOR INSTALLING AN SFA MACERATOR



Vertical pumping must take place at the start of the DISCHARGE (1). **From the highest point of the discharge (2), an incline of at least 1% is necessary.**



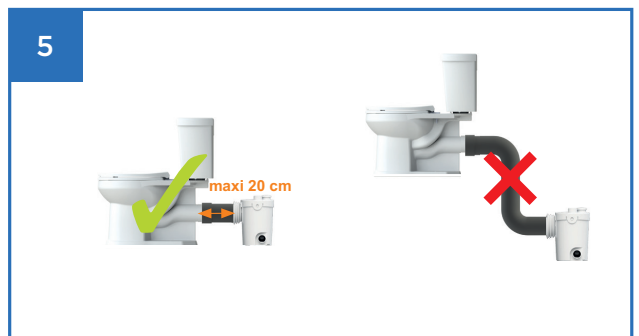
For the installation of connection elbows on the drainage piping, use 2 x 45° elbows rather than one 90° elbow. **The larger radius curves DECREASE the discharge losses.**



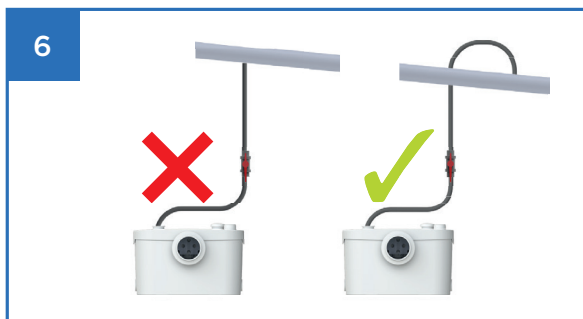
Plan for a slope between the sanitary appliances and the SFA macerator.



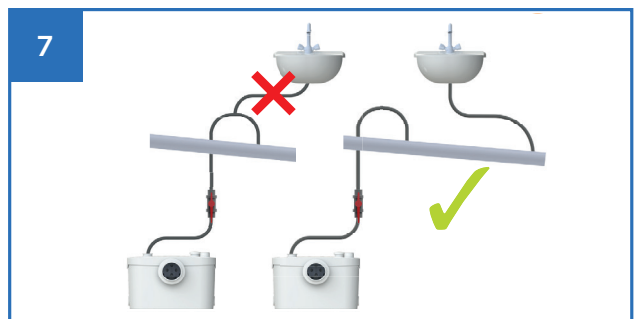
• If the discharge takes place in a direct downwards way, **provide for an aerator valve placed at the highest point to avoid the siphoning phenomenon.**



The appliance must not be installed **more than 20 cm behind the toilet, nor at a lower level than the bowl.**



The macerator discharge pipe must be connected to the downspout **from above, following the direction of flow.**



No sanitary appliance must be connected to the small diameter drainage pipe **specific to the macerator.**